

3100-iSIC Quick Start Guide

This guide will help you get started. Detailed instructions are available in the NexSens 3100-iSIC manual.

Overview

The NexSens 3100-iSIC (Intelligent Sensor Interface and Control) data logger uses an integrated cellular modem and over-the-air communication to transmit data in real-time.



What's Included

- Data logger with cellular modem
- 12 VDC battery
- A77 Programming cable
- iSIC Kit
 - (2) Gland fittings
 - (5) Desiccant packs
 - RS-232 interface cable
 - (4) 56 Ω resistors

Field Installation

1. Mount the data logger to a wall, pole, or other secure location above flood stage using the A55 Mounting Plate.
2. Connect the A38 grounding kit wire to the copper lug on the bottom of the 3100-iSIC data logger and the other end to an appropriate earth ground.
3. Mount the A49 cellular antenna in a location that will maximize signal strength. Attach an RF cable from the antenna to the RF port on the 3100-iSIC.
4. Power the iSIC by connecting the 12 volt battery. Observe the green blinking LED in the hole at the end of the analog terminal strip. This only blinks for 15-20 seconds during warm-up to confirm that the data logger is powered and ready.
5. Typically the 3100-iSIC modem is factory activated and tested for cellular service. However, modems can be activated by the user. See the technical note "Activating and Configuring a Cellular Modem" in the Knowledge Base at NexSens.com for additional information.

Note: If a cellular account is not set up, the RS-232 iSIC interface cable can be used for direct connection.

6. Following modem activation, connect the cellular DB-9 cable inside of the enclosure to the DB-9 port between the green iSIC terminal strips.
7. Connect sensors to the data logger. See the appropriate sensor interface manuals for wiring and other details. Bring any cables into the enclosure by removing a port plug and installing a gland fitting from the iSIC Kit.

Configuring with iChart

1. Install iChart software on a Windows computer.
2. Ensure power is supplied to the data logger.
3. Add the 3100-iSIC to an iChart project file.

To accomplish this: Follow the Setup Device Wizard to add a site name, and then select **3100-iSIC** from the list of NexSens data loggers. Enter the correct IP address at the prompt and click **Test Connection** to check communication.

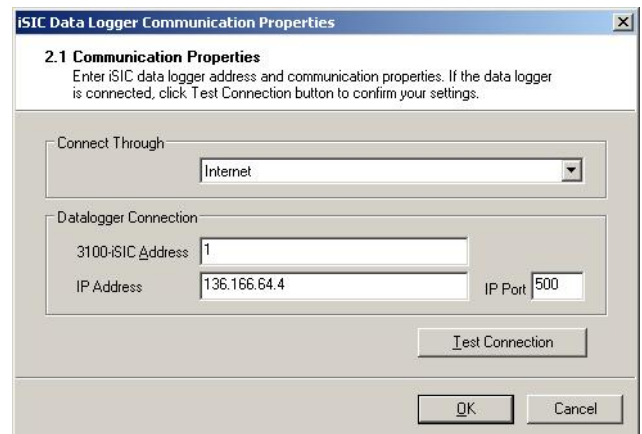


Figure 1: Step 2.1 Communication Properties dialog in the iSIC Setup Device Wizard

4. Add sensors in iChart by selecting the manufacturer and model number.
5. Continue the Setup Device Wizard and click **Program iSIC** to conclude configuration.

For more information see the online manual www.nexsens.com/pdf/nexsens_3100-isic_manual.pdf



Revision: 02
Revision Date: January 4, 2011

1415 Research Park Drive
Beavercreek, Ohio 45432
937-426-2703
www.NexSens.com