

2100-iSIC Quick Start Guide

This guide will help you get started. Detailed instructions are available in the NexSens 2100-iSIC manual.

Overview

The NexSens 2100-iSIC (Intelligent Sensor Interface and Control) data logger uses an integrated landline modem and standard telephone lines to transmit data in real-time.



What's Included

- Data logger with landline phone modem
- 12 VDC battery
- iSIC Kit
 - (2) Gland fittings
 - (5) Desiccant packs
 - RS-232 interface cable
 - (4) 56 Ω resistors

Field Installation

1. Mount the data logger to a wall, pole, or other secure location above flood stage using an A55 mounting plate.
2. Connect the A38 grounding kit wire to the copper lug on the outside bottom panel of the iSIC data logger and the other end to an appropriate earth ground.
3. Power the iSIC by connecting the 12 volt battery. Observe the green blinking LED in the hole at the end of the analog terminal strip. This only blinks for 15-20 seconds during warm-up to confirm that the data logger is powered and ready.

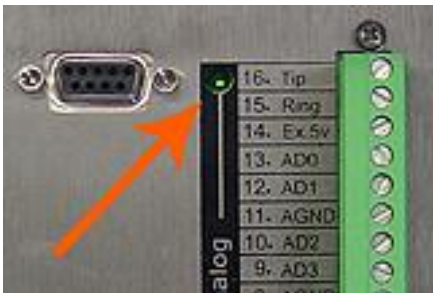


Figure 1: Green blinking LED in the hole at the end of the analog terminal strip

4. Connect sensors to the data logger. See the appropriate sensor interface manuals for wiring and other details. Bring any cables into

the enclosure by removing a port plug and installing a gland fitting from the iSIC Kit.

5. To establish the physical connection, run a stripped analog phone cable into the iSIC using a gland fitting.
6. Connect the red and green wires to pin 15 and 16 of the analog terminal strip. The wires may be connected interchangeably.

Configuring with iChart

1. Install iChart software on a Windows computer.
2. Ensure power is supplied to the data logger.
3. Add the 2100-iSIC to an iChart project file.

To accomplish this: Follow the Setup Device Wizard to add a site name, and then select **2100-iSIC** from the list of NexSens data loggers. At the prompt, enter the correct phone number and specify which PC COM Port the modem is connected to. Click **Test Connection** to check communication.

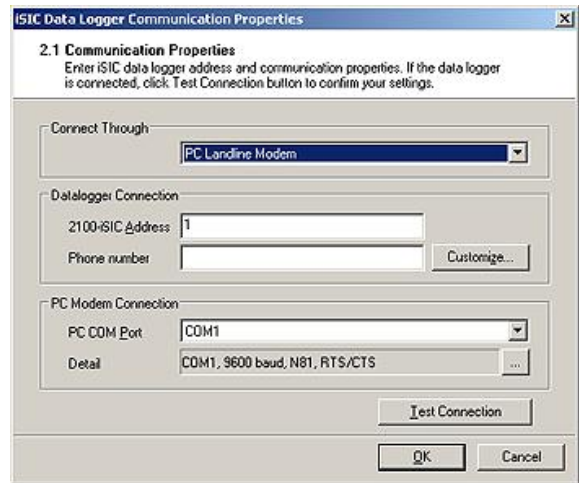


Figure 2: Step 2.1 Communication Properties dialog in the iSIC Setup Device Wizard

4. Add sensors in iChart by selecting the manufacturer and model number.
5. Continue the Setup Device Wizard and click **Program iSIC** to conclude configuration

For more information see the online manual
www.nexsens.com/pdf/nexsens_2100-isic_manual.pdf