

# iChart

environmental software

• Easy data logger & sensor setup

• Multi-vendor instrument library

• Manage multiple remote sites

• Create professional PDF reports

• Automatically post to datacenter



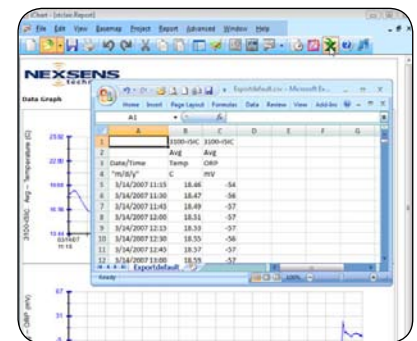
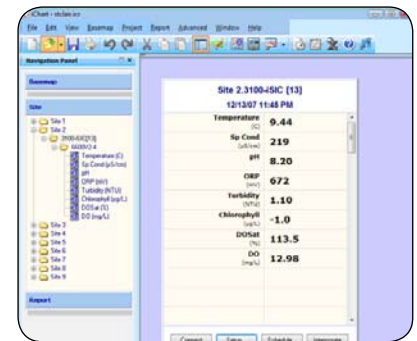
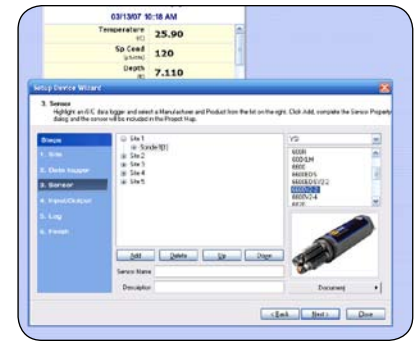
NexSens **iChart** Software is a Windows-based program that simplifies and automates many of the tasks associated with acquiring, processing, analyzing, and publishing environmental data. The software interfaces both locally (direct-connect) and remotely (through telemetry) to an **iSIC** data logger or network of data loggers. **iChart** has been designed with an open architecture, offering an easy-to-use set of tools to configure and customize monitoring projects. The graphical user interface eliminates the need for learning complicated programming languages to setup and maintain a network of remote sensors.

**iChart** offers the industry's largest device library for integrating data from popular environmental sensors and systems. Simply select the manufacturer and model number from a device index. A built-in device profile simplifies the setup and eliminates complex sensor programming. Remotely deployed **iSIC** and **SDL500** data loggers with radio, phone, cellular, Ethernet, and satellite telemetry provide real-time data access. Communication settings are predefined, and a simple point-&-click is all that is required to setup and operate remote monitoring sites.

**iChart** Software includes a unique Report Generator tool for building customized reports with historical data from all remote sites. Standard reports include time series plots with single or multiple traces, data tables, and statistical summaries generated for specified time periods. Users have the option to save report templates, eliminating the need to recreate the same report. To further automate the process, reports can be automatically generated and emailed to a predefined user list. For projects that require real-time data access from multiple locations, iChart can automatically post data to web-based project datacenters, including NexSens' **WQData** web datacenter.

## notable features

<b>Device Library</b>	Select sensor manufacturer and model number from a device index. A built in device profile offers relevant information to simplify sensor setup
<b>Unattended Access</b>	Remotely deployed iSIC data loggers with radio, phone, cellular, Ethernet, and satellite telemetry are interrogated at predefined time-based intervals
<b>Centralized Database</b>	Includes a common data entry portal with both manual and automatic import from a variety of industry-standard data formats
<b>Data Processing</b>	Standard data reports include time series plots with single or multiple traces, data tables, and statistical summaries generated for specified time periods
<b>Data Review</b>	Automatic Report Generator tool can be set to generate PDF reports at a user-defined time interval and send them via email to a predefined user list
<b>Data Visualization</b>	Includes functions and interactive tools for analyzing historical data, modeling, simulating systems, and developing statistical algorithms
<b>Data Filtering</b>	Data filtering can be set to automatically or manually eliminate erroneous points in datasets
<b>Data Replication</b>	Can be configured to automatically replicate and store all data into an ODBC compatible database using a standard Windows ODBC connection
<b>Publish &amp; Export</b>	Automatic website creation and WQData web datacenter offers an interactive, multi-level user interface for real-time data
<b>Alarming</b>	Automated alarming tools with multi-user call lists, pre-configured reason codes, and easy-to-use acknowledgement menus ensure timely alarm notification
<b>Database Integration</b>	Industry-standard database technology with multiple levels of redundancy to ensure maximum data integrity



## parts list

Part #	Description
1001	iChart Software for Windows-based computers
WQData	Annual web-based datacenter hosting service



**937.426.2703**  
8am to 7pm EST, Monday-Friday

**937.426.1125**  
24 hours a day, every day

NexSens Technology, Inc.  
PO Box 151  
Alpha, OH 45301-0151

**E** info@nexsens.com

**→** nexsens.com