



1328 Parkway Court • Beaver Creek • OH • 45432
Phone: (937) 426-2703 • Fax: (937) 426-1125 • E-Mail: info@NexSens.com
Visit us on the web at <http://www.NexSens.com>

**Tritech MicronEchosounder
Sensor Interface Manual
Revision 08.03.21**

Table of Contents

iChart Software and iSIC Firmware Updates.....	2
Tritech Configuration.....	3
Wiring.....	4
Adding to iChart.....	5

About NexSens Technology, Inc.

NexSens software and real-time data logging systems are designed to simplify the setup and operation of environmental monitoring networks. NexSens products automate much of the tedious programming, data collection, and manual data processing common with other systems.

iChart is an easy-to-learn, easy-to-use Windows-based software program designed to interface with the industry's most popular environmental monitoring sensors and systems. A large multi-vendor instrument library makes setup quick and easy. iChart automates much of the tedious programming, data collection and manual data processing common with other environmental data collection systems.

The NexSens iSIC (Intelligent Sensor Interface and Control) is a state-of-the-art line of data loggers that simplify the collection of real-time data from environmental sensors and monitoring instruments. The iSIC data logger supports multi-vendor sensor connections and is designed for environmental data monitoring with NexSens communication equipment and software.

iChart Software and iSIC Firmware Updates

NexSens periodically releases new versions of iChart software and iSIC firmware to be downloaded free of charge. The updated versions typically add new features, improve existing features, and/or add more reliability to the system. It is important that iChart is updated to the latest version before connecting a new sensor to your iSIC data logger. Your computer will require internet access to update automatically.



To obtain the latest versions of software and firmware, in iChart, go to **Help | Check for Updates:**

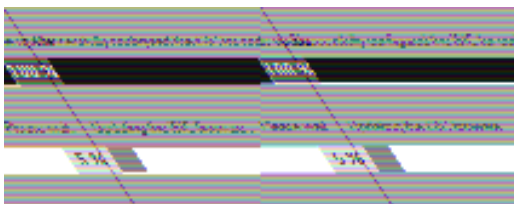
iChart will check the NexSens website for a more up to date version of software. If you are running the latest version iChart will let you know.

Otherwise it will ask you if you would like to update, and then begin to do so automatically.

After obtaining the latest software, you can then perform a code update on an iSIC data logger. Select **Advanced | iSIC | Code Update** to open the **Code Update**



Select the telemetry option used to communicate with the iSIC, as well as the iSIC address.



When iChart is finished updating the iSIC firmware, simply click **Done** and continue with normal operation.

Note: If an internet connection is unavailable on the computer, iChart can be downloaded onto another computer and then moved to the computer where it needs installed. The latest version of iChart can be downloaded here:

<http://www.nexsens.com/support/downloads.htm>

Tritech Configuration

The best configuration for a Tritech unit in a data logging system RS232, 9600 baud, NMEA0183, auto.

As each data logger has (4) standard RS232 ports, RS232 is recommended over RS485 as RS485 is a bus architecture and only one sensor can be free running on the RS485 bus at a time. NMEA0183 is recommended as it is a standard protocol and therefore has a rich driver support within iChart software for unit selection and parameter measurement. Free running is recommended because troubleshooting, if required, is much easier if you can simply open an RS232 port and see if data is being displayed instead of having to enter commands to retrieve data values.

The recommended configuration:

Customer specified unit

Main port comms RS232 RS485

Baud Rate 115.2k
57.6k
38.4k
19.2k
9.6k
4.8k
2.4k

Message xxx.xxx<CR><LF> xxx.xxm<CR><LF>
NMEA

\$PADBT,xxx.xx,f,yyy.yy,M,zzz.zz,F*hh<cr><lf>

Mode free running Z interrogate

No return 0m 50m

Analogue output (1-50m, 0.03-5V) enabled disabled

Units are factory configured, and can be sent back for factory reconfiguration without charge.

Wiring

The Tritech Micron Echo Sounder comes as connectorized unit. One of the cable plugs directly onto the Tritech unit, the other end will connect to the iSIC data logger. See the wiring table below for wiring the unit to the data logger. This connection assumes the unit is set as RS232 output.

Note: the Tritech unit has both a Main and Auxiliary port. If they are configured differently, make sure to connect the cable to the RS232 configured port.



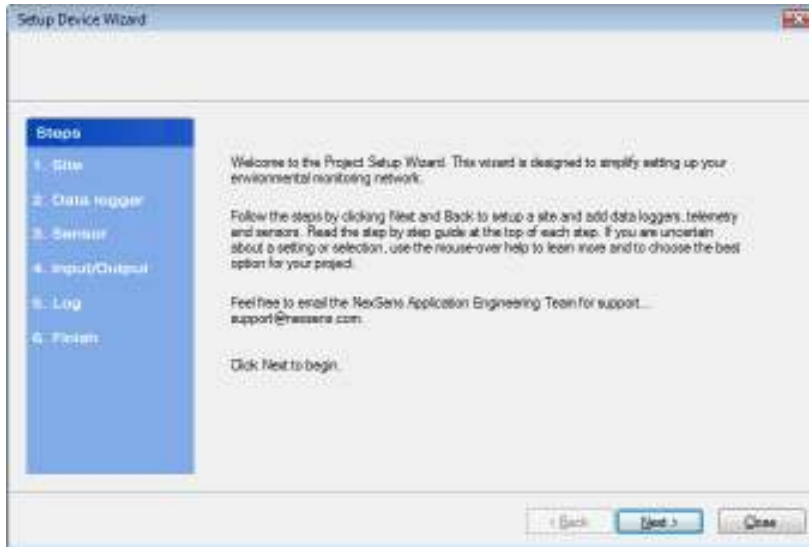
<u>Tritech</u>	<u>iSIC</u>	<u>Color</u>
Power	2-SW.A	Red
DB9 Pin 3	4-GND	Black
DB9 Pin 5	5-P1.Rx	Yellow
Power +	6-P1.Tx	Blue
Power -	4-GND	Shield

Adding to iChart

Once all wiring is completed, the device is ready to be added to an iChart database. To add the device to an existing database, select **Instrument | Add Device**. To create a new database, select **File | New Project**.

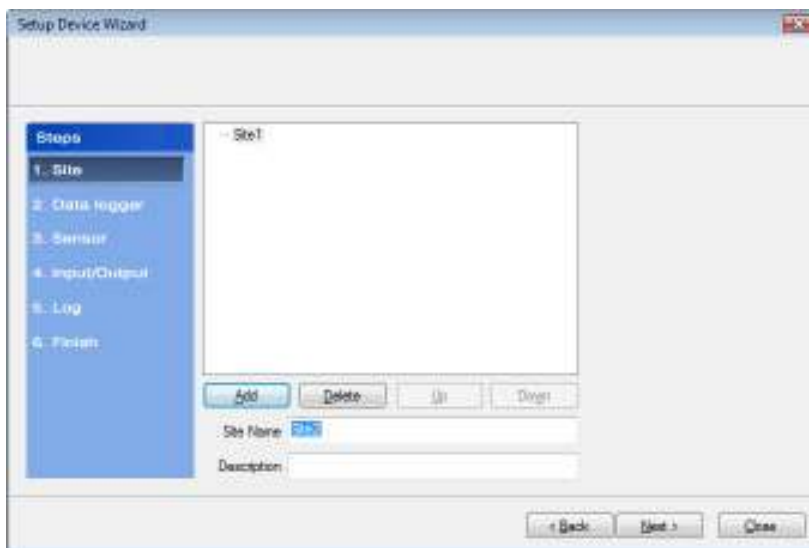
Setup Device Wizard

The Setup Device Wizard will begin. Click **Next** to continue.



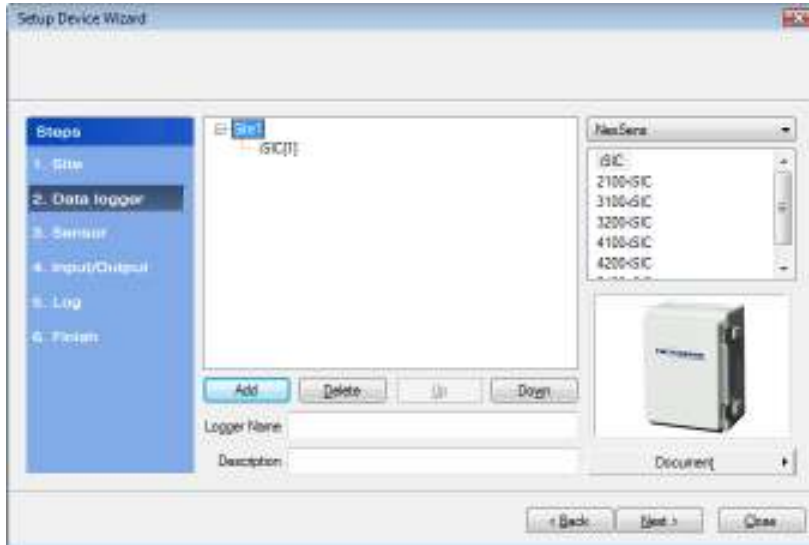
Step 1 – Site Setup

The first step is to create a site for data loggers and sensors to be located in. If this is an existing project, sites may already exist. Enter a **Site Name** and click **Add** or simply select a site that has already been added from the navigation list.



Step 2 – Data Logger & Telemetry

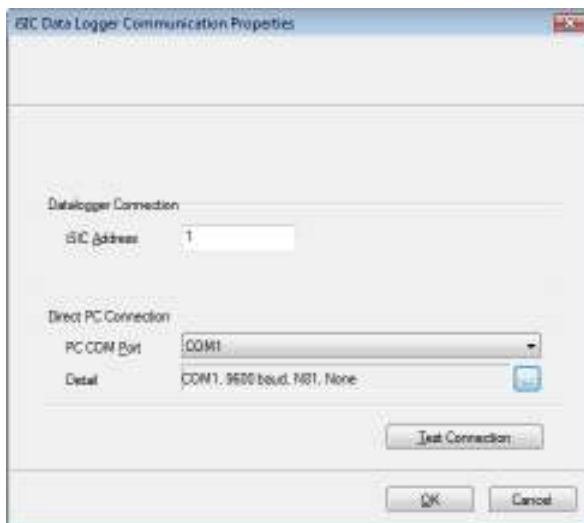
The next step is to add the data logger(s) to the sites created in the previous step. Select a site to add a data logger to. Then select the data logger model number from the list at right and click **Add** or select a data logger that has already been added from the navigation list, if simply adding the sensor to a data logger that has already been setup.



The **iSIC Data Logger Communication Properties** dialog box will appear. Enter the required iSIC data logger connection information (see below for model-specific instructions) to finish adding the data logger to the selected site. When complete, click **OK**.

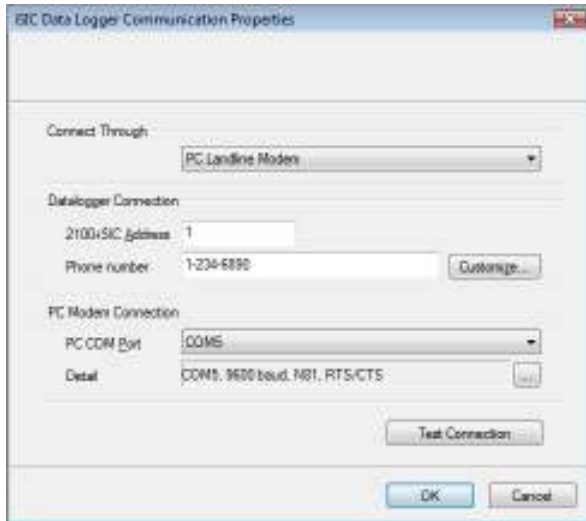
For an **iSIC** data logger, enter the iSIC address and select the PC COM Port that the data logger is connected to.

- The iSIC address is typically '1'. If unknown, enter '0' and click **Test Connection** to determine the address.
- The PC COM Port drop-down menu is the list of available COM ports iChart detected on the computer.



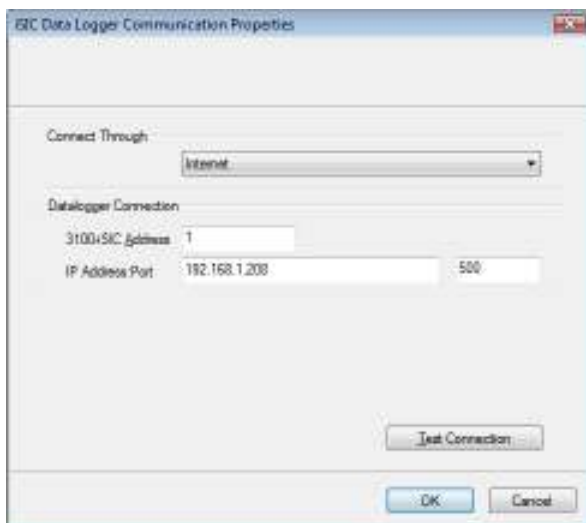
For a **2100-iSIC**, enter the 2100-iSIC address, phone number, and PC COM Port that the computer phone modem is connected to.

- The 2100-iSIC address is typically '1'. If unknown, enter '0' and click **Test Connection** to determine the address.
- The PC COM Port drop-down menu is the list of available COM ports iChart detected on the computer. Internal PC phone modems are typically set to COM3.



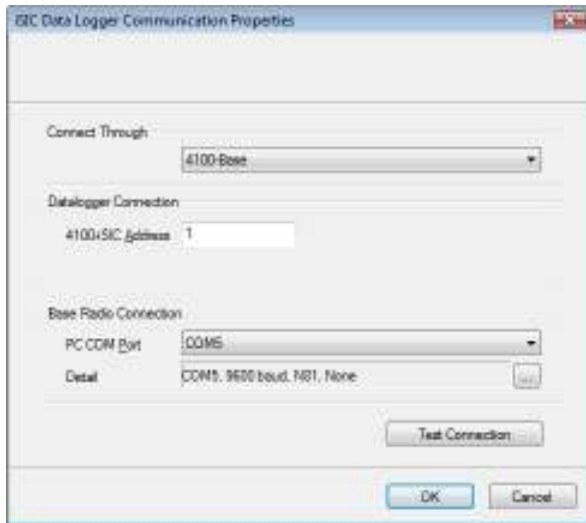
For a **3100-iSIC**, enter the 3100-iSIC address and the IP address of the data logger.

- The 3100-iSIC address is typically '1'. If unknown, enter '0' and click **Test Connection** to determine the address.
- The IP address is provided by the cellular service provider in which your cellular data account is setup. The port is set to 500 by default.



For a **4100-iSIC**, select the method in which the 4100-iSIC is connected to your PC and enter the 4100-iSIC address.

- A 4100-iSIC can connect to a PC through a 4100-BASE or a 4200-iSIC.
 - A 4100-BASE system connects to a PC via RS-232 cable.
 - A 4200-iSIC connects to a PC via landline telephone.
- The 4100-iSIC address is '1' by default.
 - If there is more than one 4100-iSIC in use, each 4100-iSIC should be programmed with different addresses (See the *4100-iSIC | iSIC Addressing* section in the iSIC manual).

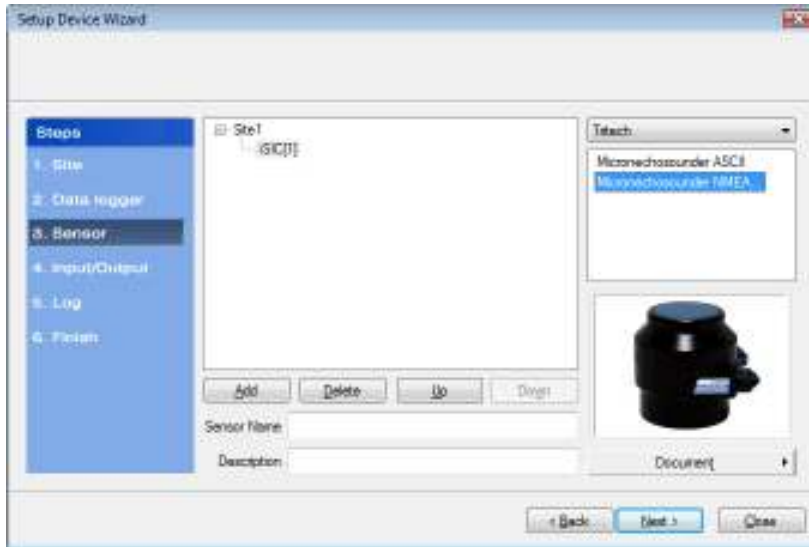


For a **4200-iSIC**, enter the iSIC address and PC COM port the data logger is connected to.

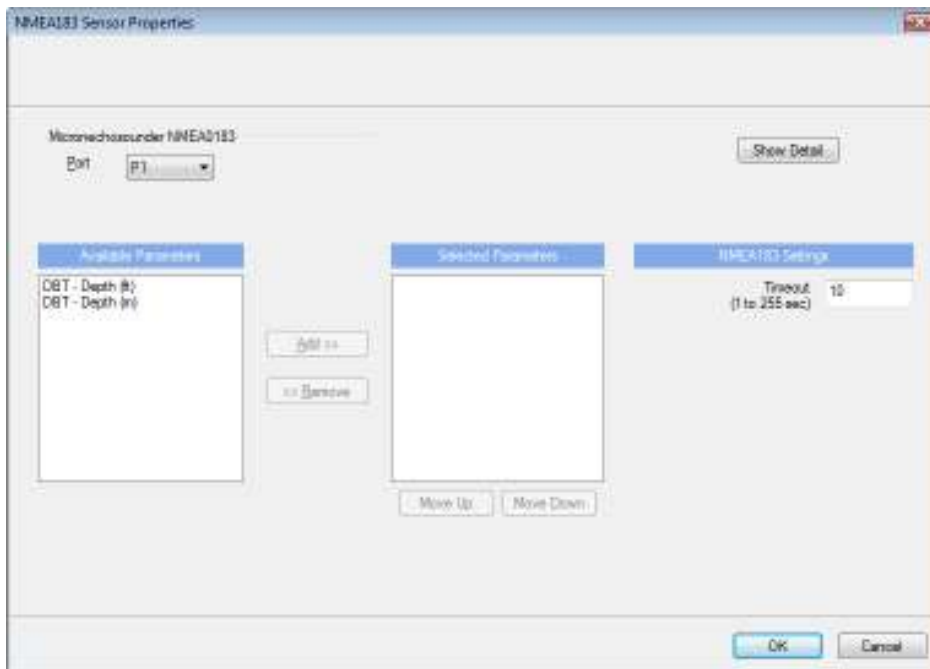
- The 4200-iSIC address is typically 250. When communicating with a 4200-iSIC, any communication using the 4200-iSIC address will be sent to the 4200-iSIC data logger.
 - Communications using any other address will be broadcast to any 4100-iSIC(s) in your radio network.
- Note:** Do not use address '0' when communicating to a 4200-iSIC.
- The drop down menu of PC COM Port's is the list of available COM ports iChart detected on the computer. Internal phone modems are typically set to COM3.

Step 3 – Sensor

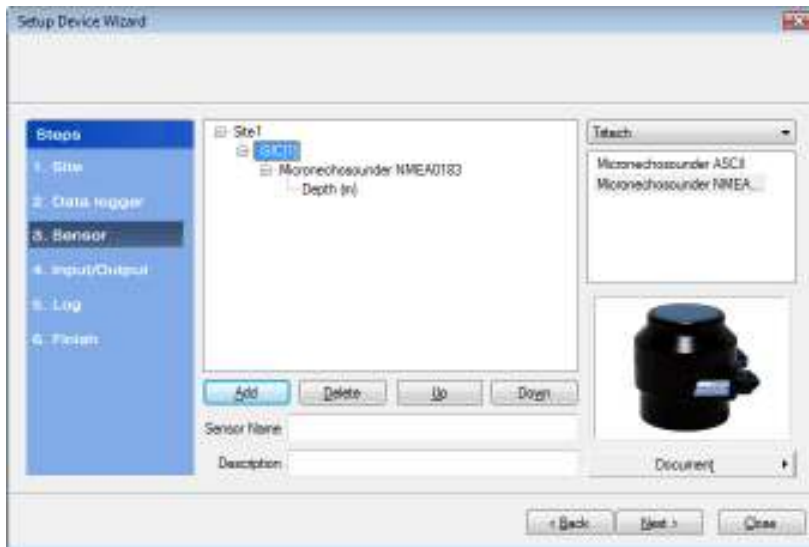
After selecting a data logger, click **Next** and select **Tritech** from the drop-down list of manufacturers. Then select the output type (NMEA is recommended) associated with your device and click **Add**.



The **Sensor Properties** dialog box will come on the screen. Select the port the Trittech is connected to from the port drop down menu. Then click on the desired unit of measurement (English – ft or Metric – m) and click the **Add** button.

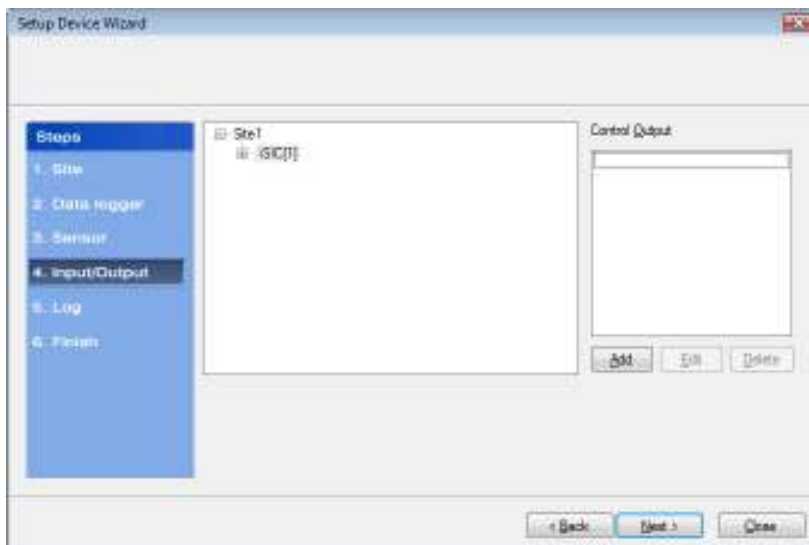


Click **OK** and the sensor will be added to the selected data logger. More sensors can be added at this time by selecting the sensor manufacturer and then sensor model number from the drop down menu on the right. Click **Next** when finished adding sensors.



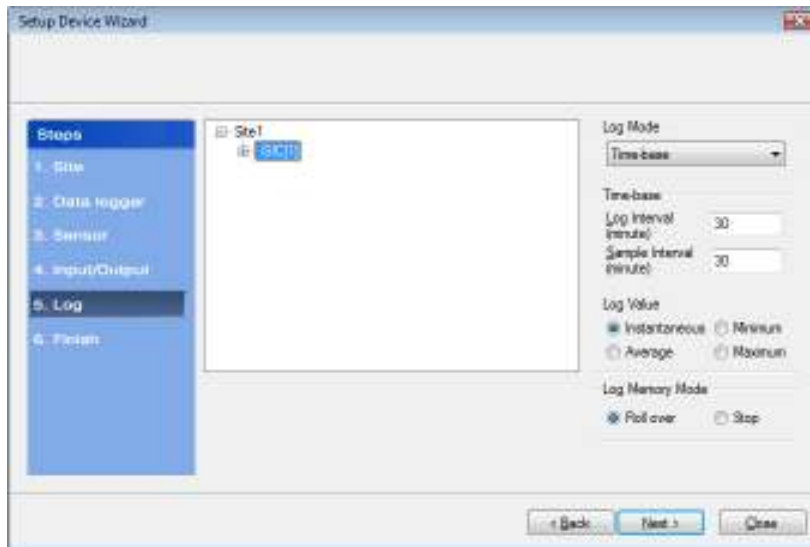
Step 4 – Input/Output

Enable any output and control features of the data logger. See the *iSIC* manual, section ***iSIC Controls*** for more information on this functionality.



Step 5 – Log

Select each data logger from the site list and enter the desired **Log Interval** and **Sample Interval** for the data logger in the **Interval** section. In the **Log Value** section, select how the data logger should log data points.



Log Mode

The Log Mode controls when data is logged by an iSIC. In **Time-base** (the default and most common), data is logged at a specified interval, controlled in the **Time-base** section. In **Event-base** log mode, data is only logged when a ground pulse is sent to the Rain input pin on the iSIC digital terminal strip (such as from the contact closure of a tipping bucket rain gauge).

Log Value

By default, the **Sample Interval** and **Log Interval** are equal. When a sampling interval is different than the log interval, all the sampled measurements for the iSIC are used to calculate the average, minimum, or maximum of that logging interval (based on the log type selected, only one can be selected at a time). The individual data points that comprise the samples are not saved; only the final, average, minimum or maximum data point is saved at the specified log interval.

Log Memory Mode

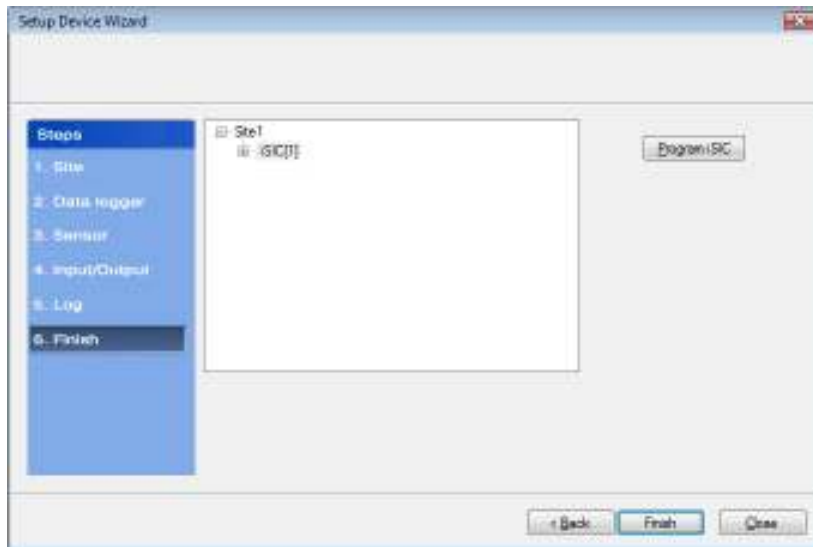
The default memory mode is **Roll over**, and is the recommended operating mode. In this mode, the last ~150K readings (when using 512K flash) will be stored in iSIC memory. When the iSIC memory has filled with readings it will “roll over” the original readings and keep logging. This is ideal for real time applications, where data is being uploaded to a PC as

In **Stop** memory mode, the first ~150K readings (when using 512K flash) will be stored in the iSIC memory. When the iSIC memory has filled with readings, it will stop logging until memory is cleared. When operating in this mode, it is recommended that memory is cleared every time data is uploaded.

Step 6 – Finish

All data loggers and sensors must be programmed before data collection can begin.

- Select an iSIC data logger and click the '**Program iSIC**' button. Before programming an iSIC:
 - The iSIC must be powered and connected to the computer.
 - The 2100-iSIC must be powered and connected to a phone line.
 - The 3100-iSIC must be powered and have a cellular data account.
 - The 4100-iSIC must be powered and be able to communicate to the computer through a 4100-base or 4200-iSIC
 - The 5100-iSIC must be powered and be able to communicate to the computer over Ethernet.
- Click **Finish** when programming is complete.



This wizard can always be revisited by selecting **Project | Setup Device Wizard** if you would like to program an iSIC at a later time or need to setup other sites, data loggers, and sensors.

Step 7 – Retrieve an Initial Data Set and Use the Instrument Within iChart

After your sensor has been added to the database, the main instrument control screen will appear.