



1328 Parkway Court • Beaver Creek • OH • 45432
Phone: (937) 426-2703 • Fax: (937) 426-1125 • E-Mail: info@NexSens.com
Visit us on the web at <http://www.NexSens.com>

**ODBC Import Devices
Sensor Interface Manual
Revision 07.12.19**

Table of Contents

Keeping iChart Up to Date.....	1
Adding to iChart.....	2
Working with Imported Files.....	7

About NexSens Technology, Inc.

NexSens software and real-time data logging systems are designed to simplify the setup and operation of environmental monitoring networks. NexSens products automate much of the tedious programming, data collection, and manual data processing common with other systems.

iChart is an easy-to-learn, easy-to-use Windows-based software program designed to interface with the industry's most popular environmental monitoring sensors and systems. A large multi-vendor instrument library makes setup quick and easy. iChart automates much of the tedious programming, data collection and manual data processing common with other environmental data collection systems.

The NexSens iSIC (Intelligent Sensor Interface and Control) is a state-of-the-art line of data loggers that simplify the collection of real-time data from environmental sensors and monitoring instruments. The iSIC data logger supports multi-vendor sensor connections and is designed for environmental data monitoring with NexSens communication equipment and software.

How to Use This Manual

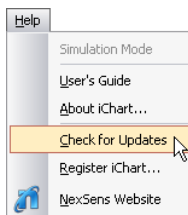
This manual is designed to provide you with detailed instructions for interfacing specific sensors to the NexSens iSIC data logger.

This manual provides you with all the information needed to interface your sensor with the iSIC data logger. For advanced system and sensor reference material:

- Review the material in the iSIC operations manual:
 - <http://www.nexsens.com/support/manuals.htm>
- Review the sensor manufacturer's operations manual. This information should have been provided with the purchase of the sensor. This material can also typically be found at the instrument manufacturer's website. If you are still having difficulty, email your technical support question to:
support@nexsens.com

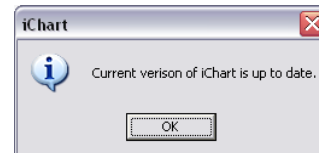
Keeping iChart Up to Date

NexSens periodically releases new versions of iChart software and iSIC firmware to be downloaded free of charge. The updated versions typically add new features, improve existing features, and/or add more reliability to the system. It is important that iChart is updated to the latest version before connecting a new sensor to your iSIC data logger. Your computer will require internet access to update automatically.

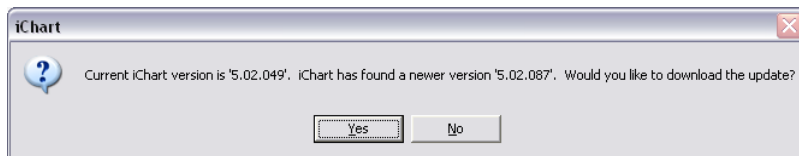


To obtain the latest version of iChart software, open the program on your computer. In the **Help** menu, select **Check for Updates**.

If your software is up to date, iChart will confirm that your computer is running the current software release.

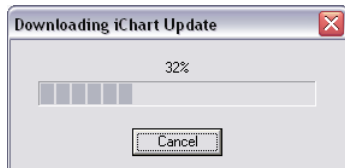


If a newer version of iChart is available, a dialog box will appear asking if you would like to upgrade to download the update.



Click **Yes**. iChart will begin downloading the update.

Note: Depending on your connection speed, this update may take a few minutes. You can continue running other applications on your computer while the download is progressing.



When the update has finished the downloading process, click **OK** and close iChart.

Reopen iChart. When the program opens, iChart will automatically begin the installation process. Follow the step-by-step installation windows to complete the iChart software update.

Note: If an internet connection is unavailable on the computer, iChart can be downloaded onto another computer and then moved to the computer where it needs installed. The latest version of iChart can be downloaded here:

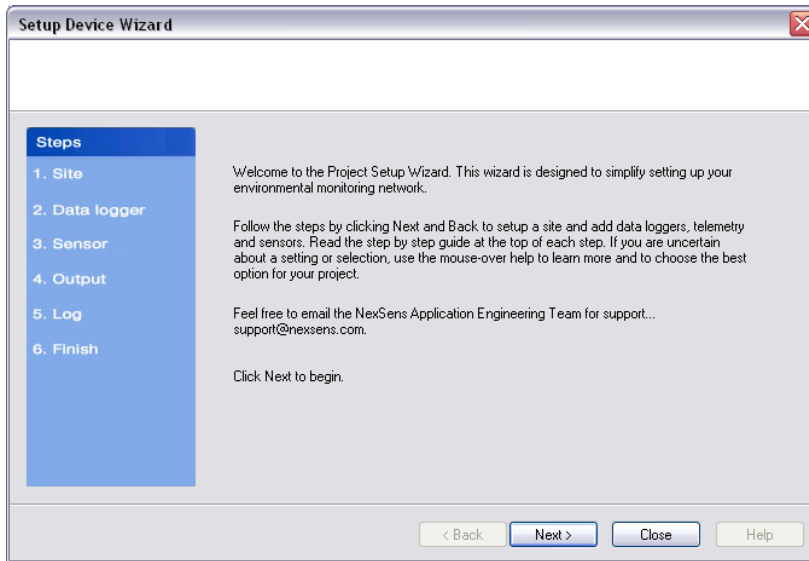
<http://www.nexsens.com/support/downloads.htm>

Adding to iChart

To add the device to an existing database, select **Instrument | Add Device**. To create a new database, select **File | New Project**.

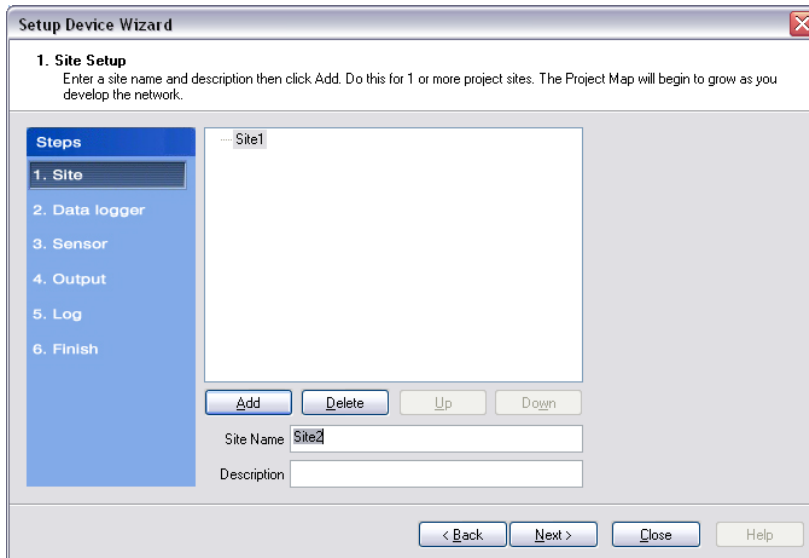
Setup Device Wizard

The Setup Device Wizard will begin. Click **Next** to continue.



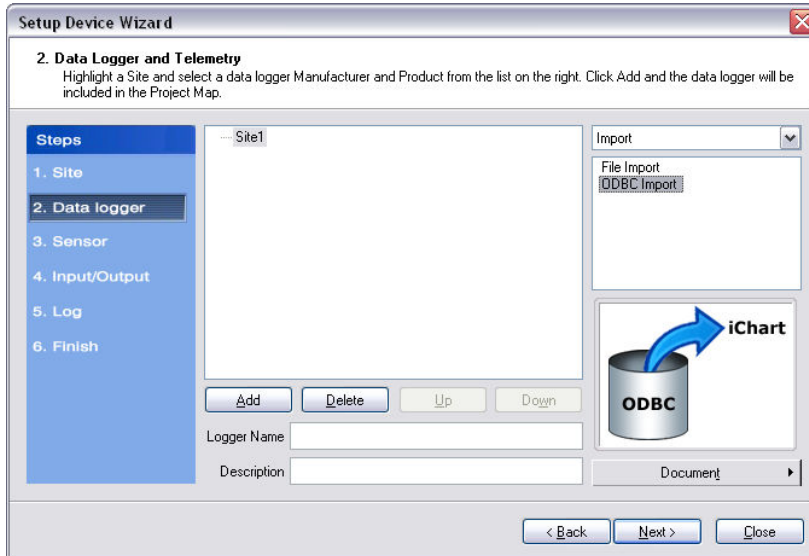
Step 1 – Site Setup

The first step is to create a site for data loggers and sensors to be located in. If this is an existing project, sites may already exist. Enter a **Site Name** and click **Add**.

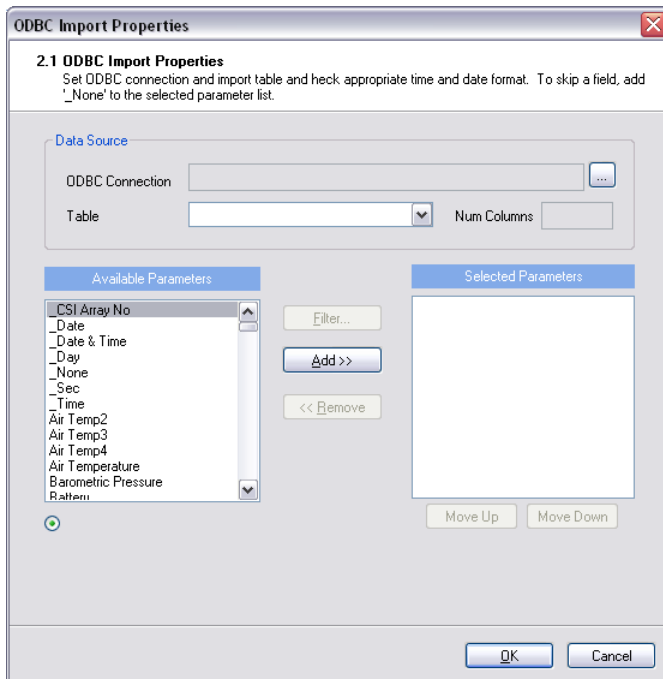


Step 2 – Data Logger & Telemetry

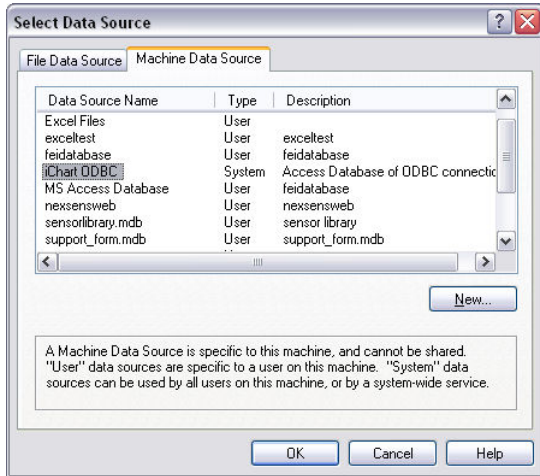
After adding a site, click **Next** and select **Generic** from the drop down list of data loggers. Select **ODBC Import** and click **Add** to open the **Import Properties** dialog box.



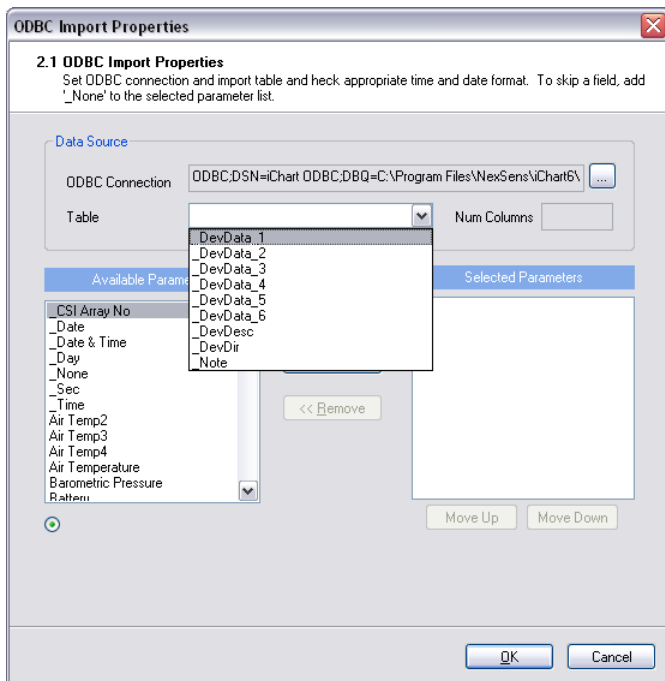
Click on the "..." next to the **ODBC Connection** to open the **Select Data Source** dialog box.



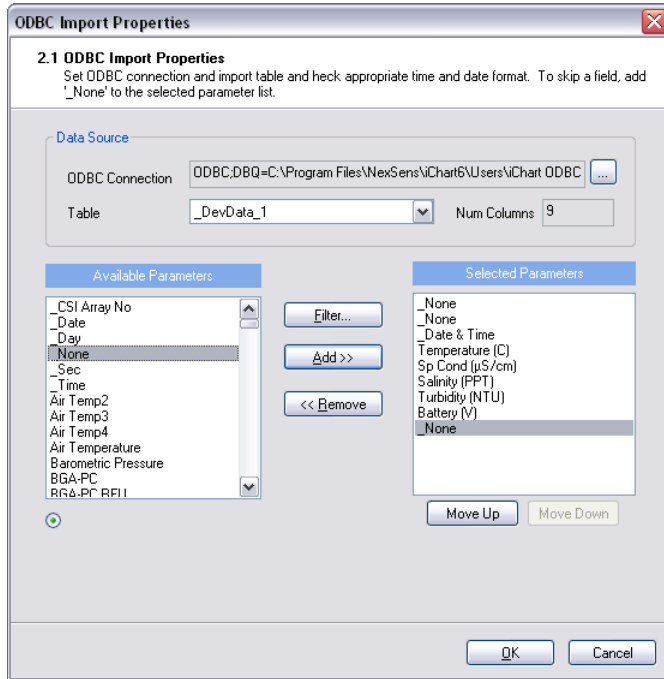
In the **Select Data Source** dialog box, select the data source connection to the ODBC database. If an ODBC data base connection is not setup, see the ODBC section of the iChart manual for more information on setting up an ODBC connection to your database.



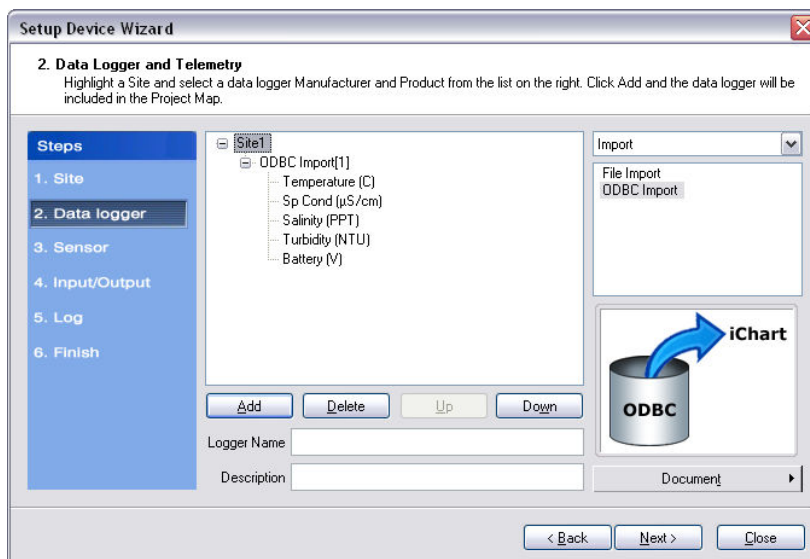
Next, select the table from the data source the data to be imported is located in. If you would like to import multiple tables, simply add multiple ODBC Import devices for each table one at a time.



Then move the parameter fields located in the ODBC database table from the **Available Parameters** list to the **Selected Parameters** list. Use **_None** for columns that you do not want to be imported. The number of columns must match the ODBC connection.

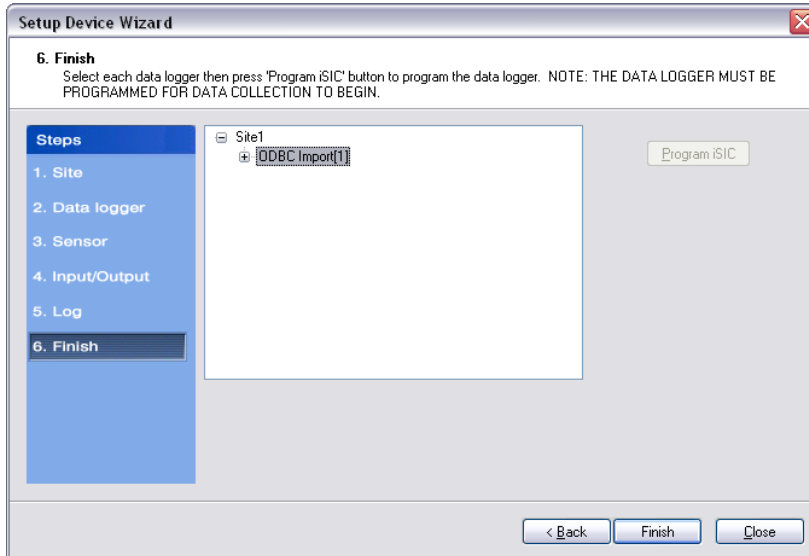


Click **OK** and the ODBC import device will be added to your database. More data loggers and sensors can be added at this time by selecting the sensor manufacturer and then sensor model number from the drop down menu on the right.



Step 3 – Finish Setup Device Wizard

After setting up the import device, click **Next** until reaching the end of the **Setup Device Wizard**. Then click **Finish**.



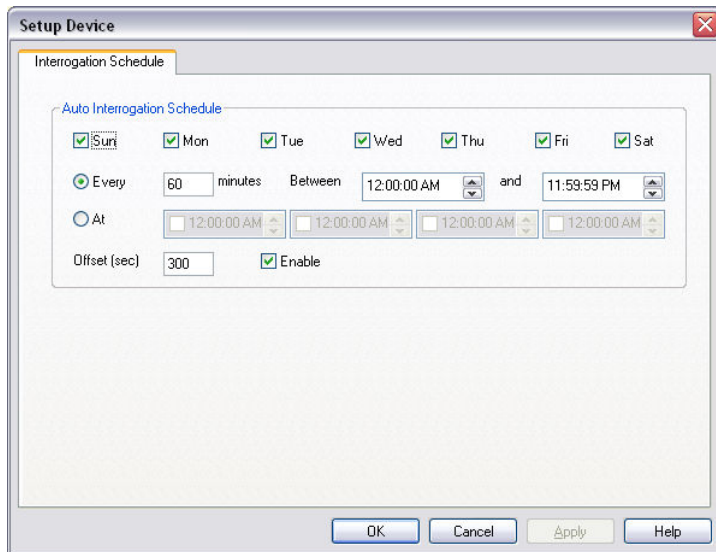
Working with Imported Files

Auto-Import Schedule

After successfully adding the device to the database, edit the auto-import schedule by clicking on the **Schedule** button located underneath the parameter readings.



By default iChart will automatically interrogate the device five minutes after every hour.



Manually Importing Data



Data can be manually imported by clicking on the "Import" button.

Please note that data must be imported in chronological order. Once data has been imported for a certain date, iChart will only process data after that date.